

Clip-Lok 2P Box for sensitive profiles used in lithium batteries for electrical vehicles.

This box is tailor-made for the highly sensitive aluminium profiles used in automotive industry. Our solution allows customers to transport aluminium profiles of different lengths. This way one box serves aluminium profiles in 3 different lengths. The aluminium profiles are protected by ETHA foam that slides inside the dunnage placed at the base of the pallet. The box can be flat-packed with the dunnages, thereby making it easy to store.

Clip-Lok boxes:

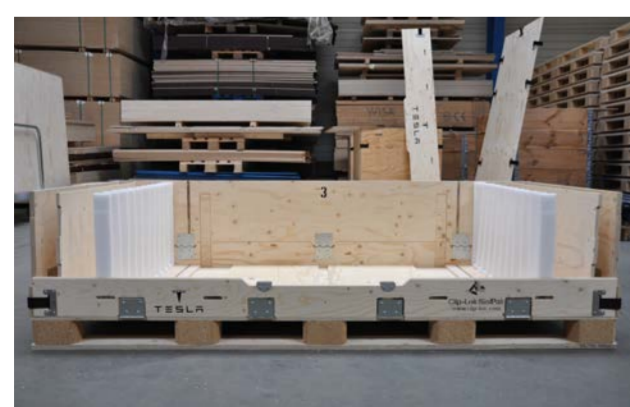
- are tailor made to suit needs of the customer.
- are ideal packaging for lean manufacturing.
- can be stacked without the need for racking.
- with ETHA foam dunnage keep the parts separated and securely loaded.
- can be reused - typically over 100 transports with normal handling.
- can be easily and quickly flat-packed, reducing transport and storage volume by up to 80%.
- are suitable for transport by road, rail, sea or air.



Clip-Lok 2P box flat-packed with dunnages inside the packaging.



Clip-Lok 2P box built up with ETHA foam ready to protect the aluminium profiles.



Clip-Lok 2P box can transport aluminium profiles of different lengths in one box.



Clip-Lok 2P box loaded with aluminium profiles secured and ready for transport.